

EN



LITE **BIPLACE**

MANUAL

Verification of Checks and repairs

<p>LITE BIPLACE</p> <p>Serial number:</p> <p>First check by ICARO / date:</p>	<p>.....</p> <p>Name/ Stamp</p>
--	---------------------------------

Check (C) Repair (R)	Which repair/ Check? Check valid until?	Performed by/ date

Check (C) Repair (R)	Which repair/ Check? Check valid until?	Performed by/ date

Check (C) Repair (R)	Which repair/ Check? Check valid until?	Performed by/ date

Check (C) Repair (R)	Which repair/ Check? Check valid until?	Performed by/ date

TABLE OF CONTENTS

VERIFICATION OF CHECKS AND REPAIRS	1
FOREWORD	4
TO GET TO KNOW YOUR LITE BIPLACE	5
WHAT TO DO WHEN IT HAPPENS?	5
PACKING INSTRUCTIONS	6
COMPATIBILITY- CHECK	10
CARE, MAINTENANCE AND REPAIR	11
CARE INSTRUCTIONS	11
REPAIRS	11
USE LIMITATIONS, PACKING- AND CHECK INTERVALS.....	11
TERMS OF THE GUARANTEE	12
ANNEX	14
GUARANTEE CARD	14
DESCRIPTION OF THE RESCUE SYSTEM	16

Congratulations on buying your
LITE BIPLACE
Rescue system and welcome to the family
of ICARO - pilots!

Before you get to know your system please read the
manual, there is important information inside.

This manual gives you information on the entire specific and general characteristics of the Rescue System.

All technical data and instructions in this manual were drawn up with great care. ICARO Paragliders cannot be made responsible for any possible errors in this manual.

Should you decide to sell this rescue system at a later date, please pass on this manual to the new owner.

No guarantee of any kind can be made against accidents, injury, equipment failure, and/or death. It is assumed that the pilot is in possession of the necessary qualifications and provisions of any relevant laws are observed.

The use of this rescue system is entirely at your own risk.

Every pilot bears the responsibility of his/her own safety. The manufacturer or distributor assumes no responsibility for accidents occurring while using it.

Do not fly unless you are personally willing to assume all risks inherent in the sport of paragliding and all responsibility for any property damage, injury, or death, which may result from use of this paraglider.

Your rescue system is made with great care and state of the art and is pattern tested as a light rescue system for tandem flying.

It is strictly prohibited to use Rescue systems

- ***beyond the maximum recommended weight,***
- ***for skydiving,***
- ***with damaged canopy, lines, connection belt or seams or***
- ***without regular check(check interval).***

WARNING

***Not suitable for use at speeds of
more than 32 m/s (115 km/h).***

All technical data and instructions were drawn up with great care. ICARO paragliders cannot be made responsible for any possible errors in this manual.

Important information in this manual is written in ***fat cursive writing***.

Any important changes to this manual will be published in our homepage (www.icaro-paragliders.de).

Should you decide to sell this rescue system at a later date, please pass on this manual to the new owner.

Each alteration (lines, canopy) is dangerous and reactions are not predictable. Your glider will lose its pattern test result and guarantee.

The manufacturer or distributor assumes no responsibility for accidents occurring while using it.

Every pilot must ensure that the rescue system is properly checked at regular intervals.

Environmental aspects

The materials of which a paraglider is made require a special waste disposal. So please send disused gliders back to us. We will care about a professional waste disposal without costing for you.

Please do our nature-near sport in a way which does not stress nature and environment!

Please do not walk beside the marked ways, do not leave your litter, do not make unnecessary loud noises and respect the sensitive balance in the mountains.

Especially at the launch site consideration is needed!

This manual is copyrighted.

Partial reproduction is allowed only after prior approval by
ICARO paragliders, all other rights are reserved.

To get to know your **LITE BIPLACE**

Technical data	
Area (m ²)	66
Number of cells	36
Weight including container (kg)	2,9
Volume packed (cm ³)	5911,5
Maximum payload (kg)	220
steerable	no
RG- Container foldout	4
Rate of descent max. payload (m/sec)	6,5
Certification number	EAPR-RG-0477/6

The rescue system is made by high quality light materials and has a circular canopy with pulled down apex. Manually deployable rescue system is suitable paragliding pilots in an emergency situation.

LITE Biplace rescue systems from ICARO are characterized by a high level of reliability and maximum material strength. Fastest inflation while maintaining moderate sink rates are features of these systems.

The material is air permeable, strong nylon. There are bands sewn into the main seams to strengthen the canopy. The base and side edges are reinforced with bands.

What to do when it happens?

If you find yourself in an uncontrollable situation in the air pull hard on the deployment handle. This will open the outer reserve container and release the reserve parachute. Then throw the reserve package forcefully away from you.

As the suspension lines become tight, the container will fall away and the reserve will open. In an emergency situation, the handle of the rescue system is given a sharp pull. The special thread which holds the closing splint breaks.

If your glider is rotating it pays to throw the reserve against the rotation as this will speed up the inflating process.

If you have had a collision and find yourself entangled with someone else's glider try to make sure you don't throw the canopy into the entanglement, as this will delay the opening.

When you are flying recurrently grab the position of the handle so you can find it in an emergency!!

If you have enough height, first try to resolve the problem and stabilize the glider as far as possible (danger of screwing of the bailout).

Do not forget to unhand the rescue handle!

If you have not enough height don't hesitate for pulling the rescue.

Packing Instructions

Packing Preparations

Before packing the rescue system it is important that the canopy is spread out on the ground for about six hours.

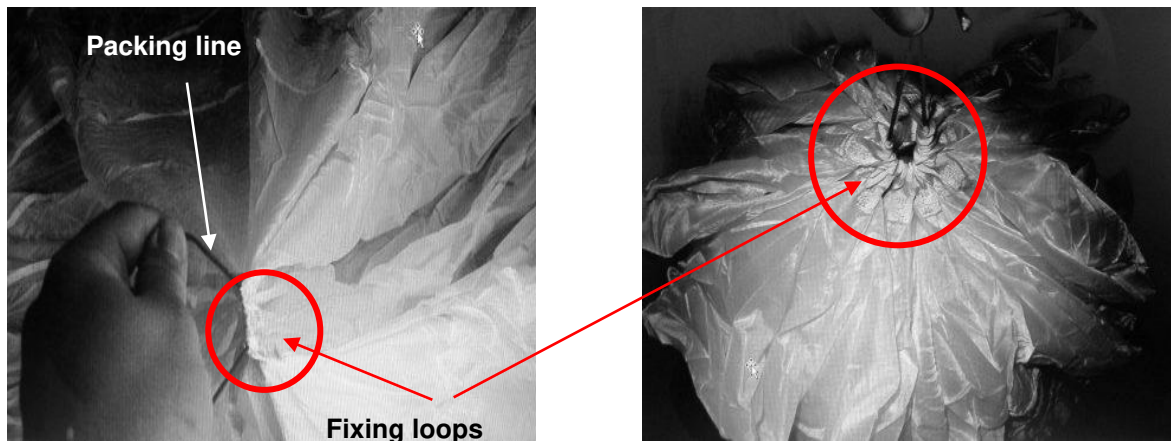
If possible, it would be even better to hang it in the air one night long. Before the rescue system gets packed, it must be looked over. If it has been deployed, it must be properly checked.

After having the rescue system packed, please ensure that rescue system and harness fit to each other. The force measured in the deployment handle should be between 50 and 80 N.

Pulling the packing line trough the fixing loops

To help you pack the rescue system, use a short piece of old paraglider line and thread it through all the apex fixing loops.

The fixing loops are on the upper third of the canopy.



Attach the apex to a stable fixed point.



Next sort out the suspension lines.



Please make sure that the middle lines are in the middle and the other lines to the side. There must not be any tangles or knots in the lines.

Sorting the panels

Take the lines in your hand as shown in the photo and fold over each panel from left to right like turning the pages in a book.



Division of panels

Lay down the canopy so that there are the same numbers of panels on each side (keep the canopy under tension).

Use sand sacks to weight down the base of the canopy.



Laying out the panels

Fold the left side onto the right side.

Then lay each panel separately and precisely back to the original side.

Do the same with the other side.



Remove the line from the fixing loops!

Folding the canopy into thirds

The left third is folded onto the middle and then the right third is folded under the middle.



S-folding canopy to fit into Inner container

Fold the canopy in "S" folds from the top right down to the base, so that it fits into the inner container.



Folding the suspension lines

Fold the suspension lines using two fingers in "S" bundles and fix with special rubber bands.

Please use new rubber bands each time you repack.

These are special rubber bands which you can buy from the manufacturer.

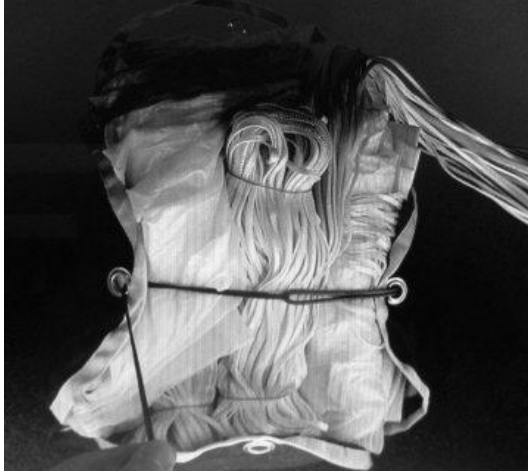


Fitting the rescue system into the inner container

The folded suspension lines are placed on the rescue chute as shown.

Use a packing thread to pull the rubber loop through the eyelets of the inner container.

The rest of the suspension lines are secured with the rubber loop. Make a note of the date of packing in the pack control booklet.

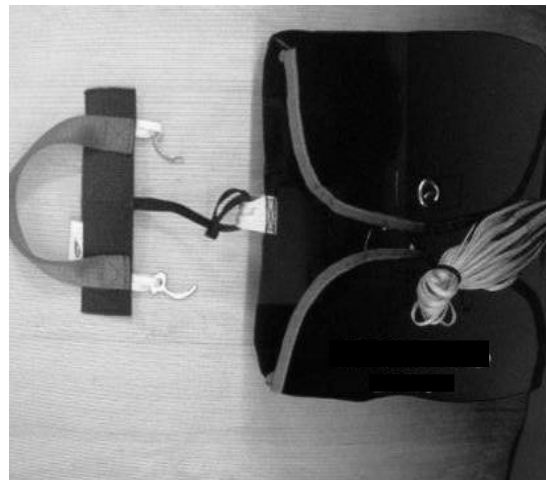


Installing your rescue system

Most harnesses have a handle for the harness containers. This handle must be connected to the inner container.

The inner container of ICARO rescue systems has two loops, in which the handle of the harness can be attached (center, side).

Handles for front and back containers are generally suspended in the central loop, container on side or under the seat, the side strap used.



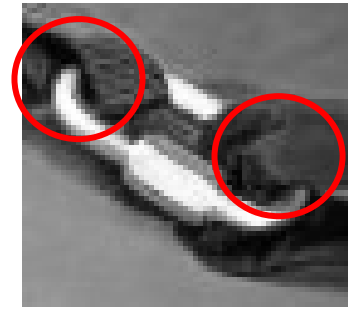
Note the instructions for the rescue unit in the operating instructions of your harness.

If there is no handle of the harness or it does not fit with your inner container, please ask the dealer of your harness or your paragliding school.

The handle must be firmly connected to the loop on the inner container.

Attachment of the connection belt with the harness

For connecting the two belts use a fixable 24 kN- snap hook with a diameter of 8 mm. It is very important that the snap hook cannot twist to prevent traverse stress of the snap hook.



Therefore use cable fixer, adhesive tape or strong rubber bands and pull it **above and below the snap hook** around the belts.

Another fixing method is to put the belt of the rescue system through the connection belt of the harness and than the rescue system trough the harness belt as shown in the photo.

It is just as very important that the knot is very tight fastened.

Therefore use cable fixer, adhesive tape or strong rubber bands and pull it **above and below the knot** around the belts.

Pay attention to the symmetry of both lines. Neither side of the loop must be longer than the other.

In order to avoid unwanted release of the rescue system, the closing splint must be held with a special thread (50 N) which is made with certified material. This special thread can be purchased from ICARO.



A higher breaking force could otherwise endanger the release of the rescue system!

Compatibility- check

A control of every new combination of rescue system and harness/outer container has to be carried out by either the producer of the harness or the rescue system or an authorized person (dealer or flight instructor).

The activation of the rescue system in flight position has to be correct and in conformity to the construction guidelines.

The maximum opening strength is 70 N. The throwing movement should be practiced every time the rescue system is repacked.

The check has to be recorded in the documentation of the rescue system.

IMPORTANT POINTS TO LOOK OUT FOR:

☞ Check (steady)

- connection of the rescue system to your harness
- connection of the harness and deployment handle
- the closing splint must be held with a special thread

☞ line from the fixing loops is removed (after each packing)

☞ Check compatibility of rescue system and harness

☞ Before each start with your glider you have to check the container is closed!!

Care, maintenance and repair

Care Instructions

- Please do not store your rescue system in the vicinity of acids, grease, oils or paint. To ensure safe operation, the system needs proper maintenance and care.
- Do not store your rescue system in extreme temperatures or humidity (more than 30° C or 55-65% humidity).
- A humid or wet canopy needs repacking.
- Exposure to UV-rays causes deterioration the fabric.
- Please only use clean and fresh water to clean your rescue system or container.
- Wet cloth stored in warm conditions will begin to mould and significantly lose structural strength. Rescue systems in this condition must be brought to the manufacturer to be checked out.
- It may take several days your rescue system to dry out completely especially the lines which take longer than the fabric.

Do not fold and store your rescue system prematurely if it not completely dry. Mildew may damage your harness and your rescue system.

Repairs

Repairs can only be carried out by the manufacturer or from the manufacturer authorized persons.

The seal of approval can only be preserved if original parts are used.

If you discover any damaged parts to the rescue system which might impede deployment, please send it back to the manufacturer to be repaired.

Use Limitations, packing- and check intervals

Packing interval

6 month; the rescue system also must be aired recurrent

Check interval

2 years; when the rescue system was opened after a flight accident the rescue system is to be checked.

Without regular certified inspections, your glider will lose its pattern test result and guarantee.

Use limitation

10 years; The rescue system is allowed to be used for a time span of 10 Years by observance of the regulations for packing and checking. Certification is no longer valid thereafter.

The certified life span can be extended by a further three years, if the rescue system is checked by the manufacturer every year.

Packing and checks of the rescue system must be done by an authorized person and documented otherwise guarantee is cancelled.

Terms of the guarantee

ICARO paragliders guarantees the proper processing, an operation within the allowable limits of proper operation and the fulfillment of the eligibility criteria of rescue equipment for **24** month at the time of first delivery by ICARO paragliders.

Guarantee is only valid for ICARO products with LTF/ EN certification.

What is covered by the guarantee?

Provided that ICARO paragliders accept the fault the guarantee contains all necessary spare parts related to the replacement or repair of defective parts and working time. ICARO paragliders accept no freight costs (outbound and return transportation).

What are the conditions of the guarantee?

Provided that ICARO paragliders accept the fault the guarantee contains all necessary spare parts related to the replacement or repair of defective parts and working time.

- ICARO paragliders needs to be informed immediately after the discovery of a defect and the defective product must be sent to us for testing.
- All flights must be accounted for within the flight book.
- There were only original spare parts used and checks, exchange and / or repairs were conducted by an authorized dealer or by ICARO paragliders company / person and properly documented.
- A fully and correctly completed guarantee card must be sent at least 6 weeks after buying the glider to ICARO paragliders commercial. Alternatively can this be sent via the appropriate online form on www.icaro-paragliders.com.

What is excluded from guarantee?

- Rescue equipment,
 - which has been thrown for a emergency,
 - which have been changed by yourself,
 - that were not purchased from an authorized dealer / flight school,
 - where the required inspection intervals were not met and the verification of the rescue system was not conducted by a ICARO paragliders authorized operation / person
- Damage
 - which has occurred due to improper treatment (i.e. storage in humidity, heat or direct sunlight)
 - caused by solvents, salt water, insects, sun, sand or humidity
 - caused by force majeure.
 - caused by the paramotor (Oil, fuel, damage in cause of the prop)
- Discoloration of the cloth material used.

In case of a concluded claim the period of guarantee carries on.

The period of guarantee and the connected claim are not prolonged and are only valid until the original date of expiry.

The freight costs (transport to and from) are not paid by ICARO paragliders.



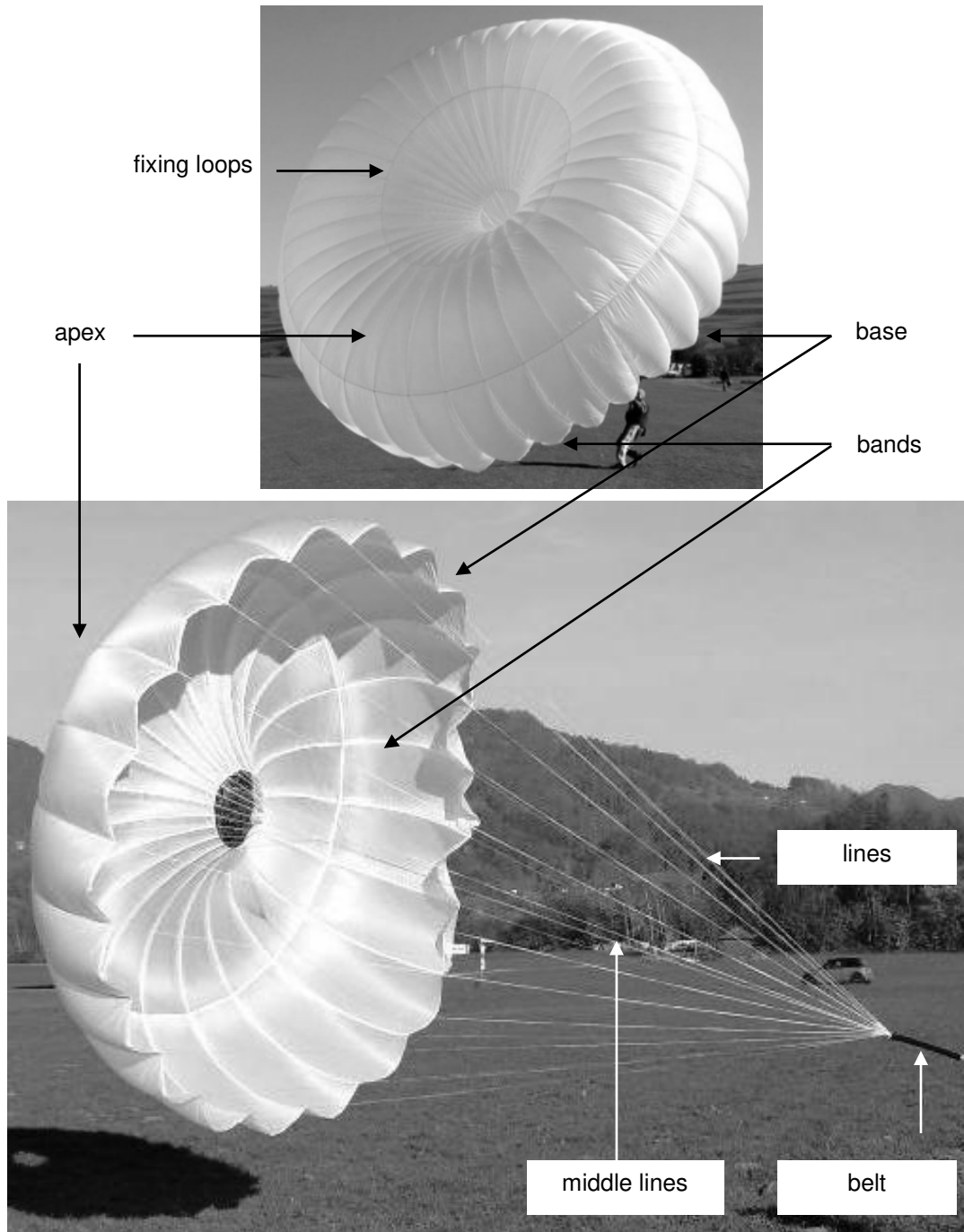
Annex

Guarantee Card

Please fill in the guarantee card which you find on our homepage www.icaro-paragliders.com and send it.

Checksheet for rescue systems			
Client (Name, Address):			
Type / size / year of construction :		Serial number:	
Certification number:		Date of last inspection:	
		Memos	yes no
Was an emergency tripping necessary?			
Where did you land after this emergency tripping?			
Necessary repairs?			
Was there a splashdown?			
Canopy	Visible damages?		
	Any dirt on the canopy ?		
	Holes in the canopy?		
	Seams ok?		
	Notations on the panels ok?		
	Certification stamp readably?		
	Apex fixing loops ok?		
Lines	Visible damages?		
	Seams ok?		
	Middle lines frayed?		
	Connection middle line to suspension lines on the top ok?		
	Suspension lines frayed?		
Inner container	Visible damages?		
	Loops for the deployment handle ok?		
	Rubber loop ok?		
	Eyelets ok?		
	Deployment handle correct fixed?		
Container correct closed?			
Compatibility check effected?		Additional repairs carried out? Which?	
Pack control booklet noted?			
Inspection stamp affixed?			
Overall result of the rescue system		Next inspection:	
As new			
Very good			
Used			
Much used			
certification only for one year			
not airworthy			
		Date, name and signature of the checker	

Description of the rescue system



Dispatch protocol/ Delivery content

Reserve elastic

Inner bag

Sticker

Rescue handle

.....
Date

.....
Signature