

PIVIUK BEYOND
THE GLIDE



PEAK 6

Technical specifications

TECHNICAL SPECIFICATIONS

			21	22	24	26
Cells	Number		80	80	80	80
Aspect ratio	Flat		6,9	6,9	6,9	6,9
	Projected		5,26	5,26	5,26	5,26
Area	Flat	m2	20,5	22	23,7	26
	Projected	m2	17,55	18,83	20,29	21,83
Span	Flat	m	11,89	12,32	12,79	13,27
Chord	Max	m	2,2	2,28	2,36	2,45
Lines	Total	m	198	205	213	224
	Main		2-1/3	2-1/3	2-1/3	2-1/3
Risers	Number		A-A' /B	A-A' /B	A-A' /B	A-A' /B
	Speed-bar	mm	140	165	175	175
Glider weight		kg	4,8	5	5,3	5,6
Total weight in flight	Min-Max	kg	70-85	80-98	92-110	105-125
Opt. weight in flight	Min-Max	kg	78-82	89-94	104-107	115-120
Certification			EN/LTF D	EN/LTF D	EN/LTF D	EN/LTF D

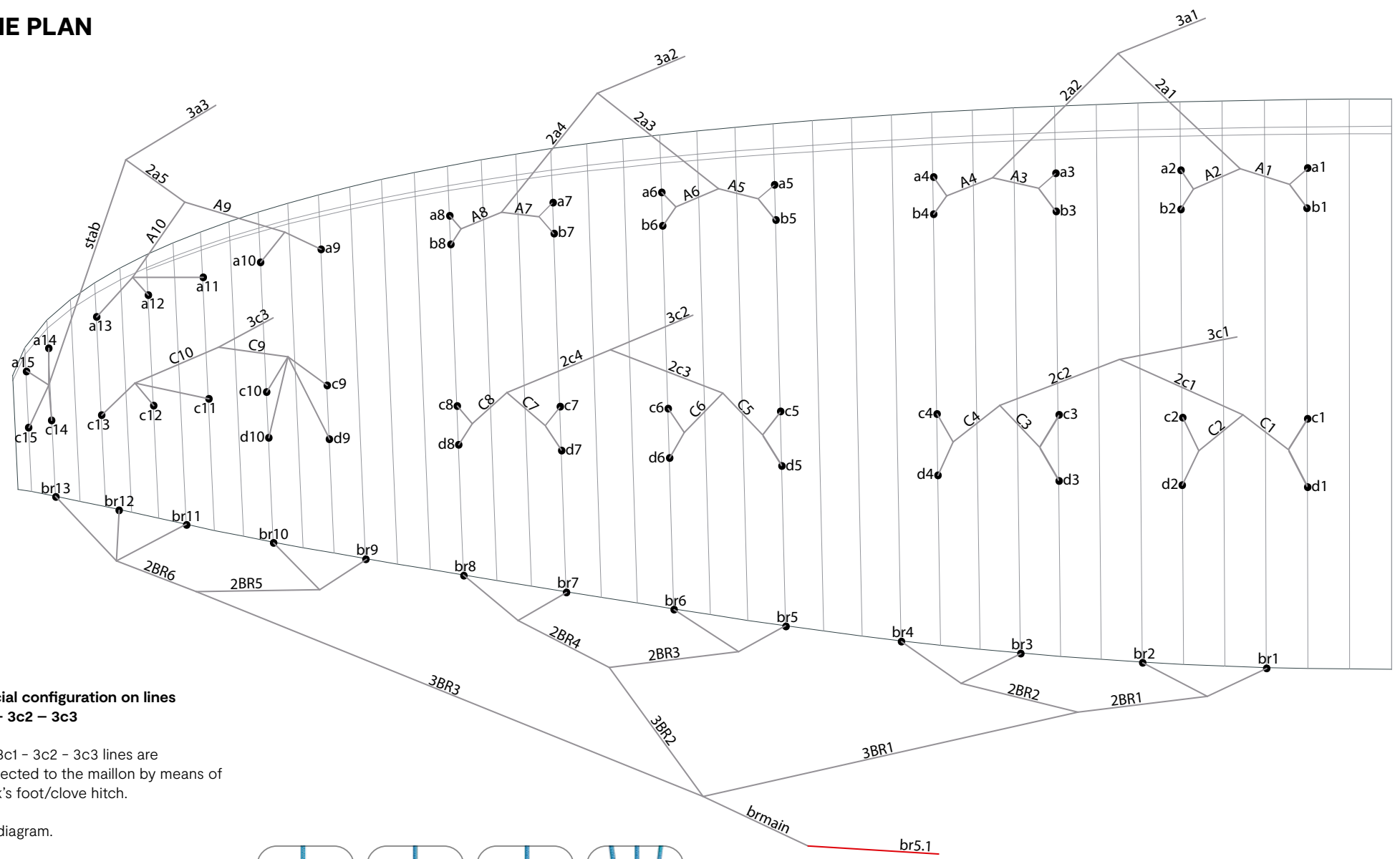
MATERIALS TECHNICAL DATA

CANOPY	FABRIC CODE	SUPPLIER
UPPER SURFACE	30 DMF / N20 DMF	DOMINICO TEX CO (KOREA)
BOTTOM SURFACE	70000 E3H	PORCHER IND (FRANCE)
PROFILES	30 DFM / 2044 32 FM	DOMINICO TEX CO (KOREA)
DIAGONALS	30 DFM / 2044 32 FM	DOMINICO TEX CO (KOREA)
LOOPS	LKI - 12	KOLON IND. (KOREA)
REINFORCEMENT LOOPS	DACRON / RIPSTOP	D-P (GERMANY)
TRAILING EDGE REINFORCEMENT	MYLAR	D-P (GERMANY)
RIBS REINFORCEMENT	LTN-0.8/0.5 STICK	SPORTWARE CO.CHINA
THREAD	SERAFIL 60	AMAN (GERMANY)

SUSPENSION LINES	FABRIC CODE	SUPPLIER
UPPER CASCADES	DC - 60	LIROS GMHB (GERMANY)
UPPER CASCADES	DC - 40	LIROS GMHB (GERMANY)
UPPER CASCADES	DC - 35	LIROS GMHB (GERMANY)
UPPER CASCADES	A-8001/U 50	EDELRID (GERMANY)
UPPER CASCADES	A-8001/U 70	EDELRID (GERMANY)
MIDDLE CASCADES	DC - 35	LIROS GMHB (GERMANY)
MIDDLE CASCADES	A-8001/U 50	EDELRID (GERMANY)
MIDDLE CASCADES	A-8001/U 70	EDELRID (GERMANY)
MIDDLE CASCADES	A-8001/U 90	EDELRID (GERMANY)
MIDDLE CASCADES	A-8001/U 130	EDELRID (GERMANY)
MIDDLE CASCADES	A-8001/U 190	EDELRID (GERMANY)
MIDDLE CASCADES	A-8001/U 230	EDELRID (GERMANY)
MAIN	A-8001/U 70	EDELRID (GERMANY)
MAIN	A-8001/U 130	EDELRID (GERMANY)
MAIN	A-8001/U 190	EDELRID (GERMANY)
MAIN	A-8001/U 340	EDELRID (GERMANY)
MAIN	A-8001/U 470	EDELRID (GERMANY)
MAIN BREAK	TARAX-200	EDELRID (GERMANY)
THREAD	SERAFIL 60	AMAN (GERMANY)

RISERS	FABRIC CODE	SUPPLIER
MATERIAL	3455	COUSIN (FRANCE)
COLOR INDICATOR	210D	TECNI SANGLES (FRANCE)
THREAD	V138	COATS (ENGLAND)
MAILLONS	3.5	ANSUNG PRECISION (KOREA)
PULLEYS	RF25109	RONSTAN (AUSTRALIA)

LINE PLAN



Special configuration on lines 3c1 – 3c2 – 3c3

The 3c1 – 3c2 – 3c3 lines are connected to the maillon by means of a lark's foot/clove hitch.

See diagram.

The lark's foot/clove hitch is used to adjust the trim to the preset range. The loop will allow readjustment of the trim due to use, stretching or shrinking.

Failure to make this loop compromises the trim of the wing and the safety of the pilot.



RISER PLAN

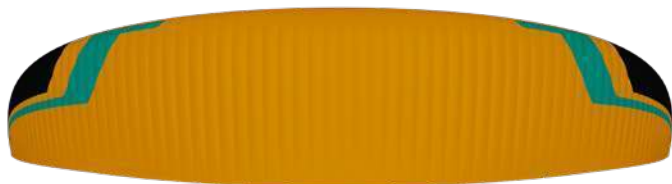
A	A'	B
3a1	3a3	3c1
3a2		3c2
		3c3



COLORS



LIZARD	SB1	SPECTRA GREEN	TOP	REF: 5335
	SB2	WHITE	BOTTOM-ALL WHITE	REF: 001
	SB3	BLACK	HORN	REF: 102
	SB4	LIMA	PRINCIPAL SHADOW	REF: 500



ZEESTER	SB1	ORANGE	TOP	REF: 744
	SB2	WHITE	BOTTOM	REF: 001
	SB3	BLACK	HORN	REF: 102
	SB4	SPECTRA GREEN	PRINCIPAL SHADOW	REF: 5335



ZURA	SB1	SLATE BLUE	TOP	REF: 317
	SB2	WHITE	BOTTOM	REF: 001
	SB3	PINK	HORN	REF: 2047
	SB4	WHITE	PRINCIPAL SHADOW	REF: 001

WING LOAD TECHNICAL DATA

PEAK 6

21		22		24		26	
P.T.V.	KG/M2	P.T.V.	KG/M2	P.T.V.	KG/M2	P.T.V.	KG/M2
70	= 3,41	80	= 3,64	92	= 3,88	105	= 4,04
71	= 3,46	81	= 3,68	93	= 3,92	106	= 4,08
72	= 3,51	82	= 3,73	94	= 3,97	107	= 4,12
73	= 3,56	83	= 3,77	95	= 4,01	108	= 4,15
74	= 3,61	84	= 3,82	96	= 4,05	109	= 4,19
75	= 3,66	85	= 3,86	97	= 4,09	110	= 4,23
76	= 3,71	86	= 3,91	98	= 4,14	111	= 4,27
77	= 3,76	87	= 3,95	99	= 4,18	112	= 4,31
78	= 3,80	88	= 4,00	100	= 4,22	113	= 4,35
79	= 3,85	89	= 4,05	101	= 4,26	114	= 4,38
80	= 3,90	90	= 4,09	102	= 4,30	115	= 4,42
81	= 3,95	91	= 4,14	103	= 4,35	116	= 4,46
82	= 4,00	92	= 4,18	104	= 4,39	117	= 4,50
83	= 4,05	93	= 4,23	105	= 4,43	118	= 4,54
84	= 4,10	94	= 4,27	106	= 4,47	119	= 4,58
85	= 4,15	95	= 4,32	107	= 4,51	120	= 4,62
		96	= 4,36	108	= 4,56	121	= 4,65
		97	= 4,41	109	= 4,60	122	= 4,69
		98	= 4,45	110	= 4,64	123	= 4,73
						124	= 4,77
						125	= 4,81

LINES TECHNICAL DATA

PEAK 6 21

REF.	MAT.	kg	COLOR	mm	REF.	MAT.	kg	COLOR	mm	REF.	MAT.	kg	COLOR	mm	REF.	MAT.	kg	COLOR	mm	REF.	MAT.	kg	COLOR	mm
A					B					C					D					BRAKE				
A1	8001/U	70	ORANGE	353	B1	8001/U	50	ORG	324	C1	8001/U	50	BLUE	535	D1	DC	35	WHT	632	BR1	DC	35	WHT	833
A2	8001/U	70	ORANGE	349	B2	8001/U	50	ORG	319	C2	8001/U	50	BLUE	527	D2	DC	35	WHT	625	BR2	DC	35	WHT	561
A3	8001/U	70	ORANGE	342	B3	8001/U	50	ORG	312	C3	8001/U	50	BLUE	516	D3	DC	35	WHT	612	BR3	DC	35	WHT	717
A4	8001/U	70	ORANGE	331	B4	8001/U	50	ORG	303	C4	8001/U	50	BLUE	485	D4	DC	35	WHT	570	BR4	DC	35	WHT	783
A5	8001/U	70	ORANGE	323	B5	8001/U	50	ORG	297	C5	8001/U	50	BLUE	425	D5	DC	35	WHT	506	BR5	DC	35	WHT	758
A6	8001/U	70	ORANGE	317	B6	8001/U	50	ORG	292	C6	8001/U	50	BLUE	386	D6	DC	35	WHT	459	BR6	DC	35	WHT	570
A7	8001/U	70	ORANGE	303	B7	8001/U	50	ORG	279	C7	8001/U	50	BLUE	344	D7	DC	35	WHT	411	BR7	DC	35	WHT	616
A8	8001/U	70	ORANGE	279	B8	8001/U	50	ORG	261	C8	8001/U	50	BLUE	308	D8	DC	35	WHT	365	BR8	DC	35	WHT	684
A9	DC	60	WHT	809						C9	DC	40	WHT	600	D9	DC	35	WHT	660	BR9	DC	35	WHT	628
A10	DC	35	WHT	713						C10	DC	35	WHT	503	D10	DC	35	WHT	562	BR10	DC	35	WHT	516
A11	DC	35	WHT	733						C11	DC	35	WHT	519						BR11	DC	35	WHT	828
A12	DC	35	WHT	677						C12	DC	35	WHT	487						BR12	DC	35	WHT	825
A13	DC	35	WHT	697						C13	DC	35	WHT	550						BR13	DC	35	WHT	900
A14	DC	35	WHT	601						C14	DC	35	WHT	623										
A15	DC	35	WHT	578						C15	DC	35	WHT	614										
A1	8001/U	90	ORANGE	985						C1	8001/U	50	Blue	496						2BR1	DC	35	Wht	839
A2	8001/U	90	ORANGE	902						C2	8001/U	50	BLUE	382						2BR2	DC	35	WHT	580
A3	8001/U	90	ORANGE	912						C3	8001/U	50	BLUE	395						2BR3	DC	35	WHT	730
A4	8001/U	90	ORANGE	963						C4	8001/U	50	BLUE	505						2BR4	DC	35	WHT	617
A5	8001/U	90	ORANGE	874						C5	8001/U	50	BLUE	501						2BR5	DC	35	WHT	821
A6	8001/U	90	ORANGE	766						C6	8001/U	50	BLUE	405						2BR6	DC	35	WHT	442
A7	8001/U	90	ORANGE	778						C7	8001/U	50	BLUE	445										
A8	8001/U	90	ORANGE	786						C8	8001/U	50	BLUE	513										
A9	8001/U	70	ORANGE	762						C9	8001/U	50	BLUE	548										
A10	8001/U	70	ORANGE	678						C10	8001/U	50	BLUE	482										
2A1	8001/U	190	ORANGE	1249						2C1	8001/U	90	BLUE	936						3BR1	8001/U	50	ORANGE	3251
2A2	8001/U	190	ORANGE	1229						2C2	8001/U	90	BLUE	916						3BR2	8001/U	50	ORANGE	2943
2A3	8001/U	190	ORANGE	1104						2C3	8001/U	90	BLUE	831						3BR3	8001/U	50	ORANGE	2651
2A4	8001/U	190	ORANGE	1037						2C4	8001/U	90	BLUE	775						BRMAIN	8001/U	90	ORANGE	1289
2A5	8001/U	90	ORANGE	1906																				
STAB	8001/U	50	ORANGE	2558																				
3A1	8001/U	340	ORANGE	4236						3C1	8001/U	190	BLUE	4861						BR5.1	TARAX	200	RED	1500
3A2	8001/U	340	ORANGE	4369						3C2	8001/U	190	BLUE	4903										
3A3	8001/U	130	ORANGE	2806						3C3	8001/U	70	BLUE	5137										KNOT POINT: 1300

LINES TECHNICAL DATA

PEAK 6 22

REF.	MAT.	kg	COLOR	mm	REF.	MAT.	kg	COLOR	mm	REF.	MAT.	kg	COLOR	mm	REF.	MAT.	kg	COLOR	mm	REF.	MAT.	kg	COLOR	mm
A					B					C					D					BRAKE				
A1	8001/U	70	ORANGE	366	B1	8001/U	50	ORANGE	336	C1	8001/U	50	BLUE	554	D1	DC	35	WHT	655	BR1	DC	35	WHT	863
A2	8001/U	70	ORANGE	362	B2	8001/U	50	ORANGE	330	C2	8001/U	50	BLUE	545	D2	DC	35	WHT	647	BR2	DC	35	WHT	581
A3	8001/U	70	ORANGE	354	B3	8001/U	50	ORANGE	323	C3	8001/U	50	BLUE	535	D3	DC	35	WHT	633	BR3	DC	35	WHT	743
A4	8001/U	70	ORANGE	342	B4	8001/U	50	ORANGE	314	C4	8001/U	50	BLUE	502	D4	DC	35	WHT	590	BR4	DC	35	WHT	812
A5	8001/U	70	ORANGE	335	B5	8001/U	50	ORANGE	308	C5	8001/U	50	BLUE	440	D5	DC	35	WHT	524	BR5	DC	35	WHT	786
A6	8001/U	70	ORANGE	329	B6	8001/U	50	ORANGE	302	C6	8001/U	50	BLUE	400	D6	DC	35	WHT	475	BR6	DC	35	WHT	591
A7	8001/U	70	ORANGE	314	B7	8001/U	50	ORANGE	289	C7	8001/U	50	BLUE	357	D7	DC	35	WHT	426	BR7	DC	35	WHT	637
A8	8001/U	70	ORANGE	289	B8	8001/U	50	ORANGE	271	C8	8001/U	50	BLUE	319	D8	DC	35	WHT	378	BR8	DC	35	WHT	709
A9	DC	60	WHT	838						C9	DC	40	WHT	622	D9	DC	35	WHT	683	BR9	DC	35	WHT	650
A10	DC	35	WHT	738						C10	DC	35	WHT	521	D10	DC	35	WHT	582	BR10	DC	35	WHT	535
A11	DC	35	WHT	759						C11	DC	35	WHT	537						BR11	DC	35	WHT	857
A12	DC	35	WHT	701						C12	DC	35	WHT	505						BR12	DC	35	WHT	854
A13	DC	35	WHT	722						C13	DC	35	WHT	570						BR13	DC	35	WHT	932
A14	DC	35	WHT	622						C14	DC	35	WHT	646										
A15	DC	35	WHT	599						C15	DC	35	WHT	637										
A1	8001/U	90	ORANGE	1019						C1	8001/U	50	Blue	513						2BR1	DC	35	Wht	869
A2	8001/U	90	ORANGE	934						C2	8001/U	50	BLUE	396						2BR2	DC	35	WHT	601
A3	8001/U	90	ORANGE	945						C3	8001/U	50	BLUE	410						2BR3	DC	35	WHT	755
A4	8001/U	90	ORANGE	998						C4	8001/U	50	BLUE	524						2BR4	DC	35	WHT	640
A5	8001/U	90	ORANGE	905						C5	8001/U	50	BLUE	519						2BR5	DC	35	WHT	850
A6	8001/U	90	ORANGE	794						C6	8001/U	50	BLUE	419						2BR6	DC	35	WHT	459
A7	8001/U	90	ORANGE	806						C7	8001/U	50	BLUE	461										
A8	8001/U	90	ORANGE	815						C8	8001/U	50	BLUE	532										
A9	8001/U	70	ORANGE	789						C9	8001/U	50	BLUE	568										
A10	8001/U	70	ORANGE	702						C10	8001/U	50	BLUE	500										
2A1	8001/U	190	ORANGE	1294						2C1	8001/U	90	BLUE	969						3BR1	8001/U	50	ORANGE	3367
2A2	8001/U	190	ORANGE	1273						2C2	8001/U	90	BLUE	950						3BR2	8001/U	50	ORANGE	3049
2A3	8001/U	190	ORANGE	1144						2C3	8001/U	90	BLUE	861						3BR3	8001/U	50	ORANGE	2750
2A4	8001/U	190	ORANGE	1074						2C4	8001/U	90	BLUE	803						BRMAIN	8001/U	90	ORANGE	1397
2A5	8001/U	90	ORANGE	1974																				
STAB	8001/U	50	ORANGE	2650																				
3A1	8001/U	340	ORANGE	4407						3C1	8001/U	190	BLUE	5054						BR5.1	TARAX	200	RED	1500
3A2	8001/U	340	ORANGE	4547						3C2	8001/U	190	BLUE	5096										
3A3	8001/U	130	ORANGE	2930						3C3	8001/U	70	BLUE	5337										KNOT POINT: 1300

LINES TECHNICAL DATA

PEAK 6 24

REF.	MAT.	kg	COLOR	mm	REF.	MAT.	kg	COLOR	mm	REF.	MAT.	kg	COLOR	mm	REF.	MAT.	kg	COLOR	mm	REF.	MAT.	kg	COLOR	mm
A					B					C					D					BRAKE				
A1	8001/U	70	ORANGE	380	B1	8001/U	50	ORANGE	349	C1	8001/U	50	BLUE	575	D1	DC	35	WHT	655	BR1	DC	35	WHT	896
A2	8001/U	70	ORANGE	375	B2	8001/U	50	ORANGE	343	C2	8001/U	50	BLUE	566	D2	DC	35	WHT	647	BR2	DC	35	WHT	604
A3	8001/U	70	ORANGE	367	B3	8001/U	50	ORANGE	335	C3	8001/U	50	BLUE	555	D3	DC	35	WHT	633	BR3	DC	35	WHT	770
A4	8001/U	70	ORANGE	355	B4	8001/U	50	ORANGE	326	C4	8001/U	50	BLUE	521	D4	DC	35	WHT	590	BR4	DC	35	WHT	843
A5	8001/U	70	ORANGE	348	B5	8001/U	50	ORANGE	320	C5	8001/U	50	BLUE	457	D5	DC	35	WHT	524	BR5	DC	35	WHT	815
A6	8001/U	70	ORANGE	341	B6	8001/U	50	ORANGE	314	C6	8001/U	50	BLUE	416	D6	DC	35	WHT	475	BR6	DC	35	WHT	615
A7	8001/U	70	ORANGE	325	B7	8001/U	50	ORANGE	300	C7	8001/U	50	BLUE	370	D7	DC	35	WHT	426	BR7	DC	35	WHT	661
A8	8001/U	70	ORANGE	300	B8	8001/U	50	ORANGE	281	C8	8001/U	50	BLUE	331	D8	DC	35	WHT	378	BR8	DC	35	WHT	736
A9	DC	60	WHT	870						C9	DC	40	WHT	645	D9	DC	35	WHT	683	BR9	DC	35	WHT	675
A10	DC	35	WHT	766						C10	DC	35	WHT	541	D10	DC	35	WHT	582	BR10	DC	35	WHT	556
A11	DC	35	WHT	788						C11	DC	35	WHT	558						BR11	DC	35	WHT	889
A12	DC	35	WHT	728						C12	DC	35	WHT	524						BR12	DC	35	WHT	886
A13	DC	35	WHT	749						C13	DC	35	WHT	592						BR13	DC	35	WHT	968
A14	DC	35	WHT	646						C14	DC	35	WHT	670										
A15	DC	35	WHT	622						C15	DC	35	WHT	661										
A1	8001/U	90	ORANGE	1057						C1	8001/U	50	Blue	532						2BR1	DC	35	Wht	901
A2	8001/U	90	ORANGE	970						C2	8001/U	50	BLUE	411						2BR2	DC	35	WHT	625
A3	8001/U	90	ORANGE	981						C3	8001/U	50	BLUE	425						2BR3	DC	35	WHT	783
A4	8001/U	90	ORANGE	1037						C4	8001/U	50	BLUE	545						2BR4	DC	35	WHT	666
A5	8001/U	90	ORANGE	939						C5	8001/U	50	BLUE	538						2BR5	DC	35	WHT	881
A6	8001/U	90	ORANGE	824						C6	8001/U	50	BLUE	435						2BR6	DC	35	WHT	477
A7	8001/U	90	ORANGE	837						C7	8001/U	50	BLUE	479										
A8	8001/U	90	ORANGE	847						C8	8001/U	50	BLUE	552										
A9	8001/U	70	ORANGE	819						C9	8001/U	50	BLUE	590										
A10	8001/U	70	ORANGE	729						C10	8001/U	50	BLUE	519										
2A1	8001/U	190	ORANGE	1342						2C1	8001/U	90	BLUE	1005						3BR1	8001/U	50	ORANGE	3492
2A2	8001/U	190	ORANGE	1322						2C2	8001/U	90	BLUE	986						3BR2	8001/U	50	ORANGE	3166
2A3	8001/U	190	ORANGE	1187						2C3	8001/U	90	BLUE	894						3BR3	8001/U	50	ORANGE	2858
2A4	8001/U	190	ORANGE	1115						2C4	8001/U	90	BLUE	834						BRMAIN	8001/U	90	ORANGE	1516
2A5	8001/U	90	ORANGE	2049																				
STAB	8001/U	50	ORANGE	2750																				
3A1	8001/U	340	ORANGE	4594						3C1	8001/U	190	BLUE	5266						BR5.1	TARAX	200	RED	1500
3A2	8001/U	340	ORANGE	4743						3C2	8001/U	190	BLUE	5317										
3A3	8001/U	130	ORANGE	3065						3C3	8001/U	70	BLUE	5571										KNOT POINT: 1300

LINE MEASUREMENTS

PEAK 6 - 21

LINES HEIGHT + RISER mm

	A	B	C	D	BR
1	7328	7299	7322	7419	7602
2	7241	7211	7200	7298	7330
3	7224	7194	7182	7278	7227
4	7264	7236	7261	7346	7293
5	7175	7149	7154	7235	7110
6	7061	7036	7019	7092	6922
7	6992	6968	6961	7028	6855
8	6976	6958	6993	7050	6923
9	6790		6783	6843	6779
10	6694		6686	6745	6667
11	6630		6636		6600
12	6574		6604		6597
13	6594		6667		6672
14	6482		6504		
15	6459		6495		

RISERS LENGHT mm

A	A'	B	
500	500	500	STANDARD
			ACCELERATED

PEAK 6 - 22

LINES HEIGHT + RISER mm

	A	B	C	D	BR
1	7585	7556	7592	7695	7886
2	7496	7465	7466	7570	7604
3	7478	7448	7451	7551	7498
4	7519	7492	7532	7622	7567
5	7430	7404	7418	7504	7377
6	7313	7287	7278	7355	7182
7	7240	7216	7219	7290	7113
8	7224	7207	7252	7313	7185
9	7042		7039	7100	7037
10	6943		6939	7000	6922
11	6878		6888		6853
12	6818		6856		6850
13	6839		6921		6928
14	6719		6744		
15	6696		6735		

RISERS LENGHT mm

A	A'	B	
			STANDARD
			ACCELERATED

LINE MEASUREMENTS

PEAK 6 - 24

LINES HEIGHT + RISER mm

	A	B	C	D	BR
1	7879	7848	7872	7976	8195
2	7787	7755	7742	7847	7903
3	7770	7738	7726	7828	7793
4	7814	7785	7812	7903	7866
5	7723	7695	7700	7787	7670
6	7601	7574	7556	7633	7470
7	7526	7501	7494	7565	7399
8	7511	7492	7528	7589	7474
9	7310		7304	7368	7320
10	7206		7200	7263	7201
11	7138		7146		7130
12	7078		7112		7127
13	7099		7180		7209
14	6978		7002		
15	6954		6993		

RISERS LENGHT mm

A	A'	B	
			STANDARD
			ACCELERATED

SUSPENSION TECHNICAL DATA

MATERIAL CODE		DC	DC	DC	A-8001/U	A-8001/U	A-8001/U	A-8001/U	A-8001/U	A-8001/U	A-8001/U	A-8001/U	TARAX
STRENGTH CODE		35	40	60	50	70	90	130	190	230	340	470	200
DIAMETER m/m	∅	0,38	0,5	0,6	0,5	0,7	0,8	0,9	1,1	1,1 x 1,4	1,5 X 1,9	1,6 X 2,2	1,7
CORE MATERIAL		DYNEEMA	DYNEEMA	DYNEEMA	ARAMID	ARAMID	ARAMID	ARAMID	ARAMID	ARAMID	ARAMID	ARAMID	DYNEEMA
SLEEVE MATERIAL		NO	NO	NO	NO	NO	NO	NO	NO	NO	NO	NO	POLYESTER
WEIGHT G/M	TOTAL	0,11	0,19	0,24	0,25	0,4	0,5	0,8	1,1	1,4	2,2	2,9	2
BREAKING STRENGTH daN	MINIMUM	35	40	60	50	70	90	130	190	230	340	470	200
	MAXIMUM	38	48	84									
STRENGTH AFTER													
5.000 BENDING	TEST EN	33	33	74	26	39	49	88	52	69	196,6	-	
CYCLES													
ELONGATION AT	5 daN en %				0,4	0,5	0,4	0,4	0,4	0,3	0,2	0,5	0,1-0,3
	10 daN en %	0,77		0,43	0,7	0,7	0,6	0,6	0,6	0,5	0,3	0,6	0,2-0,6
	15 daN en %				1,1	1	0,8	0,8	0,7	0,6	0,4	0,7	0,3-0,7
	20 daN en %				1,5	1,3	1	0,9	0,9	0,7	0,5	0,8	0,3-0,9
	25 daN en %				1,9	1,5	1,3	1	1	0,8	0,6	0,9	0,4-1
	30 daN en %			1,2	3,3	2,8	2,3	1,8	1,6	1,3		1,2	
	75 daN en %					3,7	3,2	3,1	2,7	2,3	1,5	1,6	0,8-1,7
	100 daN en %								2,6	3,6	1,9	1,9	1,2-2
	125 daN en %								3,5	3,3		2,3	
	150 daN en %								4,3	3,6	2,6	2,7	1,6-2,4
	175 daN en %											3,1	
	200 daN en %										3,1	3,2	2-2,8
ELONGATION MAX. BREAKING STRENGTH %				3,2	3,8	3,9	4,3	4	4,4	4,4		5	

MAILLON & PULLEY TECHNICAL DATA

DESCRIPTION

MAILLON	DELTA
CODE	3.5
MATERIAL	STAINLESS STEEL
SIZE	3 m/m
WEIGHT	5 G/PIECE
QUANTITY	6 PIECES
INSERTS	2 GREEN / 4 BLACK

TECHNICAL SPECIFICATIONS



DIMENSIONS	m/m
L.T.	22
L.I.	14
H.T.	37
H.I.	29
O	5
E	12
T	4
LOAD	KG
WORKING LIMIT	110
BREAKING	550

MATERIAL

AISI 304 STAINLESS STEEL

STANDARD

CLOSING APPLIED BY MANUAL & ENTIRE SCREWING OF THE NUT

TO GUARANTEE THE HIGHEST SAFETY (NO THREAD SHOULD BE OBVIOUS)

SYSTEMATIC CONTROL OF MAILLON QUICK-LINKS BEFORE EVERY FLIGHT

DESCRIPTION

PULLEY	20 m/m
CODE	RF25109
MATERIALS	STAINLESS STEEL
	NYLON
	CARBON ACETAL
BEARING	DELRIN®
WEIGHT	9 G/PIECE

TECHNICAL SPECIFICATIONS



DIMENSIONS	m/m
L.T.	20
L.I.	20
H.T.	32
Ø	6 max
LOAD	KG
WORKING LIMIT	250
BREAKING	550

THREAD TECHNICAL DATA

SAIL MAKING

NAME	SERAFIL
N° OF REFERENCE	60
MATERIAL	POLYESTER
TYPE OF FINISH	SILK
LINEAR DENSITY	NM 61 / 3 (DTEX 163 * 3)
BREAKING STRENGTH	3,000 CN
ELONGATION	17,00%

PROPIETIES SERAFIL

SOLIDITY ARTIFICIAL LIGTH	ISO 105 B02 > 5 - 6
SOLIDITY SWEAT	ISO 105 E04 > 4
SOLIDITY WASHING	ISO 105 C04 > 3
SOLIDITY GRAZE IN DRY	ISO 105 X12 > 4
SOLIDITY WASHING IN DRY	ISO 105 D01 > 3 - 4

TREATMENT WATER REPELLENT	WR
---------------------------	----

RISERS MAKING

NAME	COATS BONDED C.F.P.
N° OF REFERENCE	V138
MATERIAL	POLYESTER
TYPE OF FINISH	SILK
BREAKING STRENGTH	9,5 KG
ELONGATION	19%

RISERS TECHNICAL DATA

RISERS

N° OF REFERENCE	3455
MATERIAL	POLYESTER & TECHNORA
WIDTH	12 MM
THICKNESS	2,25 MM
BREAKING STRENGTH	1.100 DAN
ELONGATION	MAX. 11%
WEIGHT	21,1 G/M
COLOR	BLACK

COLOR INDICATOR

N° OF REFERENCE	IC-G 1-2
MATERIAL	POLYESTER
WIDTH	70 M/M
THICKNESS	0,80 M/M
BREAKING STRENGTH	130 DN
ELONGATION	35 %
WEIGHT	32 G * L.M.
COLOR	GREEN

LOOPS

N° OF REFERENCE	LKI - 10
MATERIAL	NYLON
WIDTH	10 M/M
BREAKING STRENGTH	84 KG
ELONGATION	30 %
WEIGHT	5,5 G/M
COLOR	WHITE



Niviuk Gliders & Air Games SL

C/ Del Ter 6 - nave D

17165 La Cellera de Ter - Girona - Spain

+34 972 422 878

info@niviuk.com

www.niviuk.com

